

Internet Speeds 101

Guide to Internet speeds and more

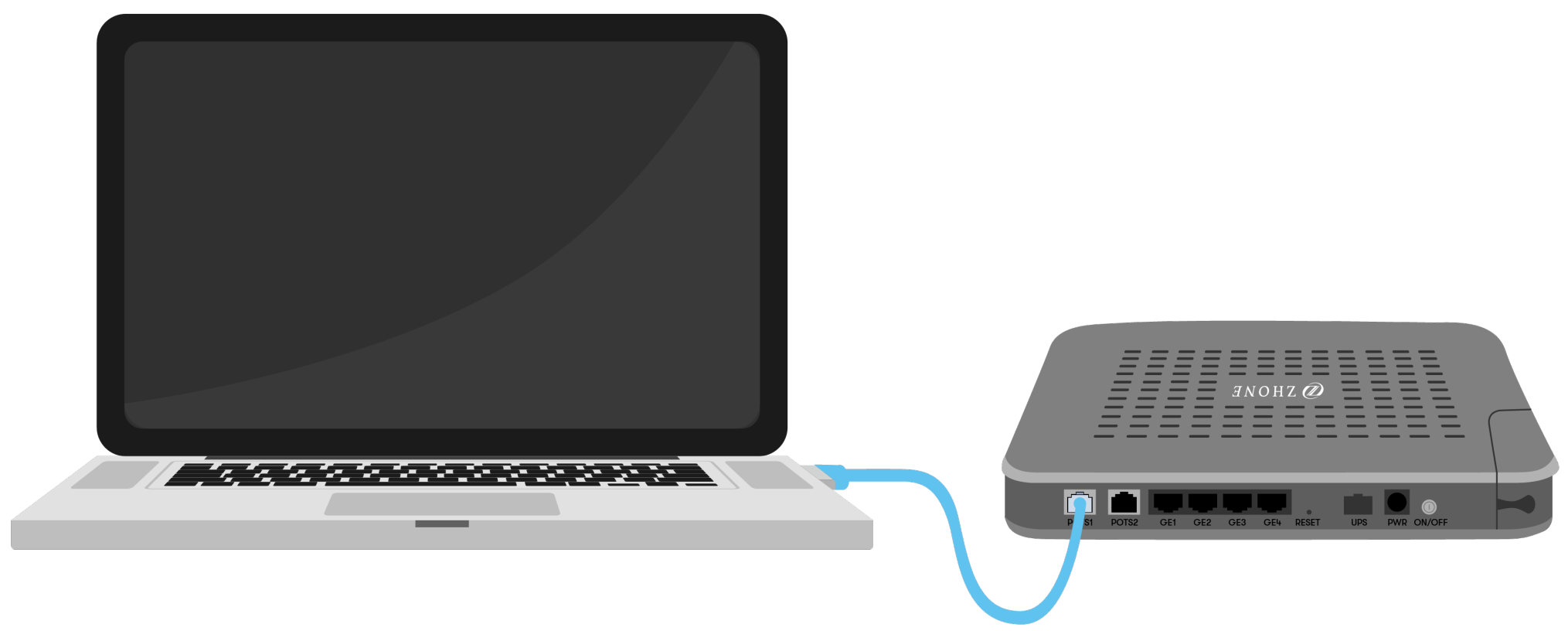
How is Internet speed measured?

Internet speed, or the speed of data transmission, is usually measured in units of Megabits per second (Mbps) and Gigabits per second (Gbps).

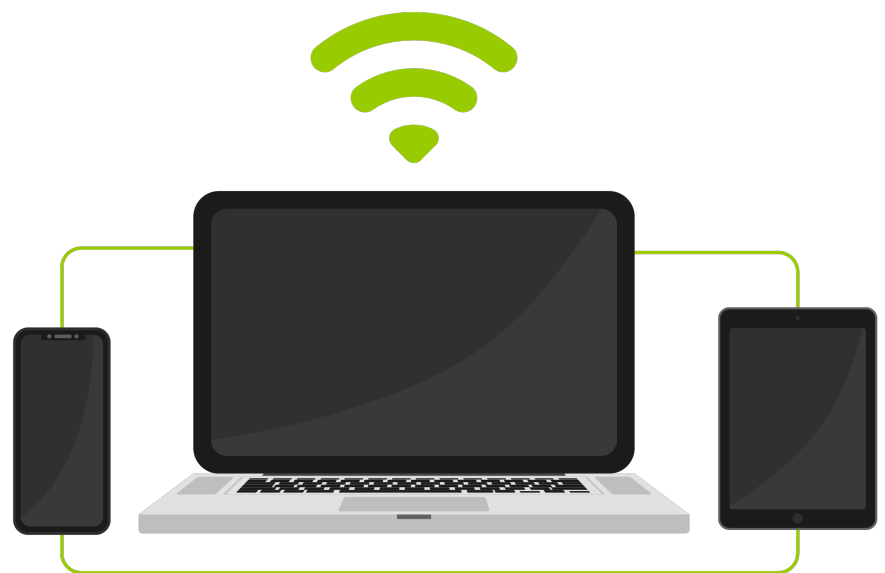
1000 Mbps = 1 Gbps

How does Internet speed work?

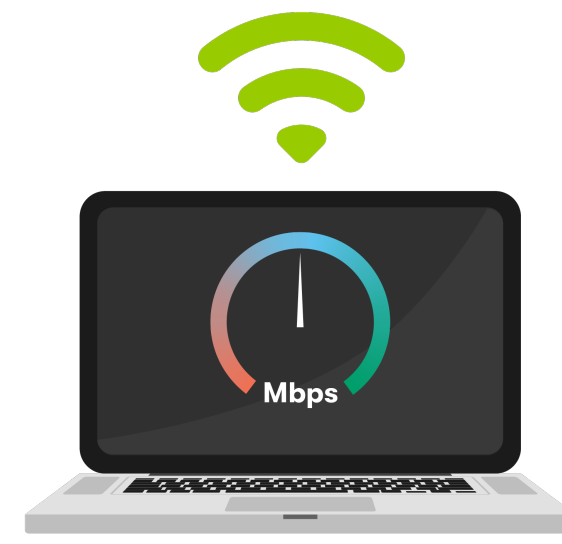
The Zhone fibre router is what connects our fibre network and provides Internet service to your home. A hardwired connection to the router or to an Ethernet port in your home provides maximum speed results. A hardwired connection simply means that your device will be plugged in to our network over our fibre cable, rather than wirelessly over WiFi.



WiFi is a shared medium, in which all connected devices compete for the same bandwidth. Our fibre Internet allows for multiple devices to simultaneously connect, all without impacting your Internet experience.



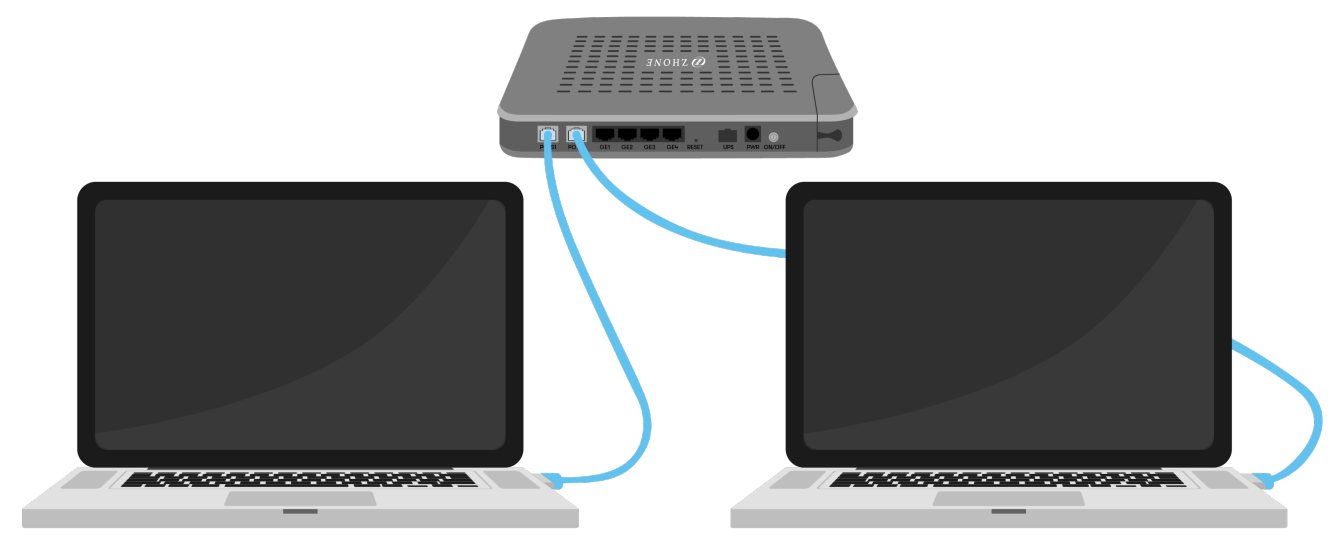
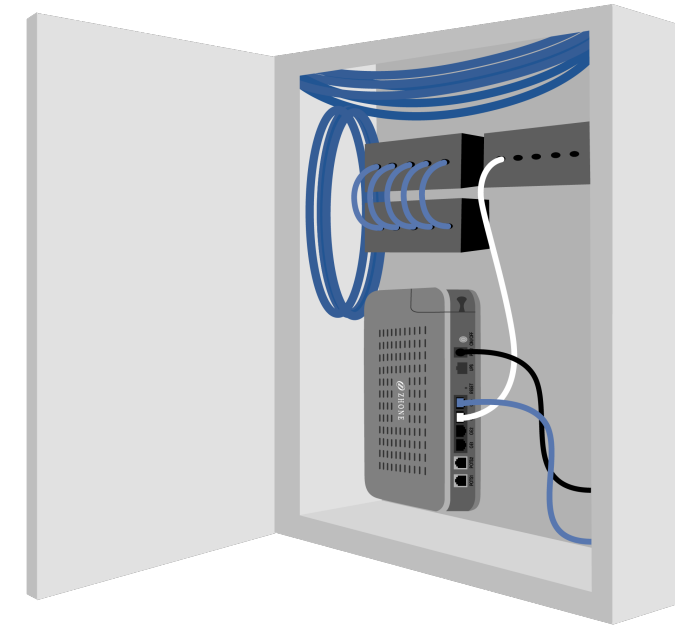
The capability of your devices is a factor to take into consideration, as most devices are able to reach speeds of 350 Mbps to 700 Mbps while connected to WiFi.



Testing your Internet speeds

Testing your Internet speed can actually be a bit tricky. Follow the steps below for the most accurate reading possible. You should be off to the races in no time.

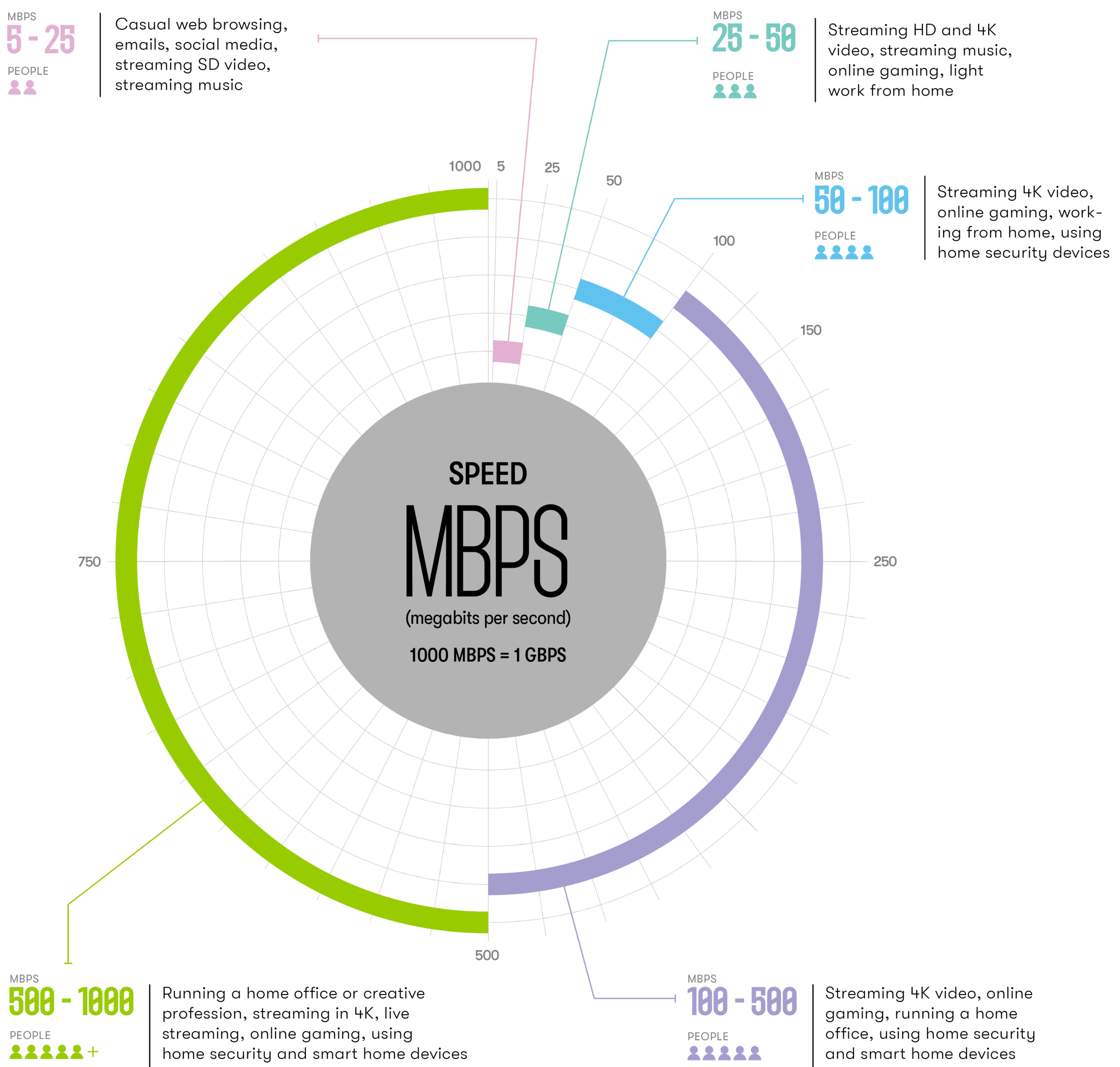
1. Locate your Zhone fibre router within your condo. This piece of hardware is usually stored in a tech panel, located in your front closet.
2. From there, you'll need to hardwire two 1 Gbps capable devices to the Zhone fibre router using an Ethernet cable. This is a requirement, as 2 Gbps on one line is only obtainable while combining speed test results from two 1 Gbps capable devices.
3. Load up an Internet speed test on each device (we recommend www.speedtest.net, but you can use whichever one you please). Make sure the Server is set up as Beanfield, take a deep breath and then simultaneously click "GO" on both devices.



That's all there is to it! Each device will have its own download speed result, for a combined total of up to 2 Gbps.

How much speed do you need?

It has become clear that consumers are seeking higher Internet speeds, but we want to be honest and transparent about how much speed you actually need. Check out the image below to get a idea of how much speed your daily usage requires.



More speed than you need

The telecommunications industry is continually evolving. At Beanfield, we believe in offering quality, reliable Internet, while being transparent about how much speed our customers truly need.

[Learn more >](#)